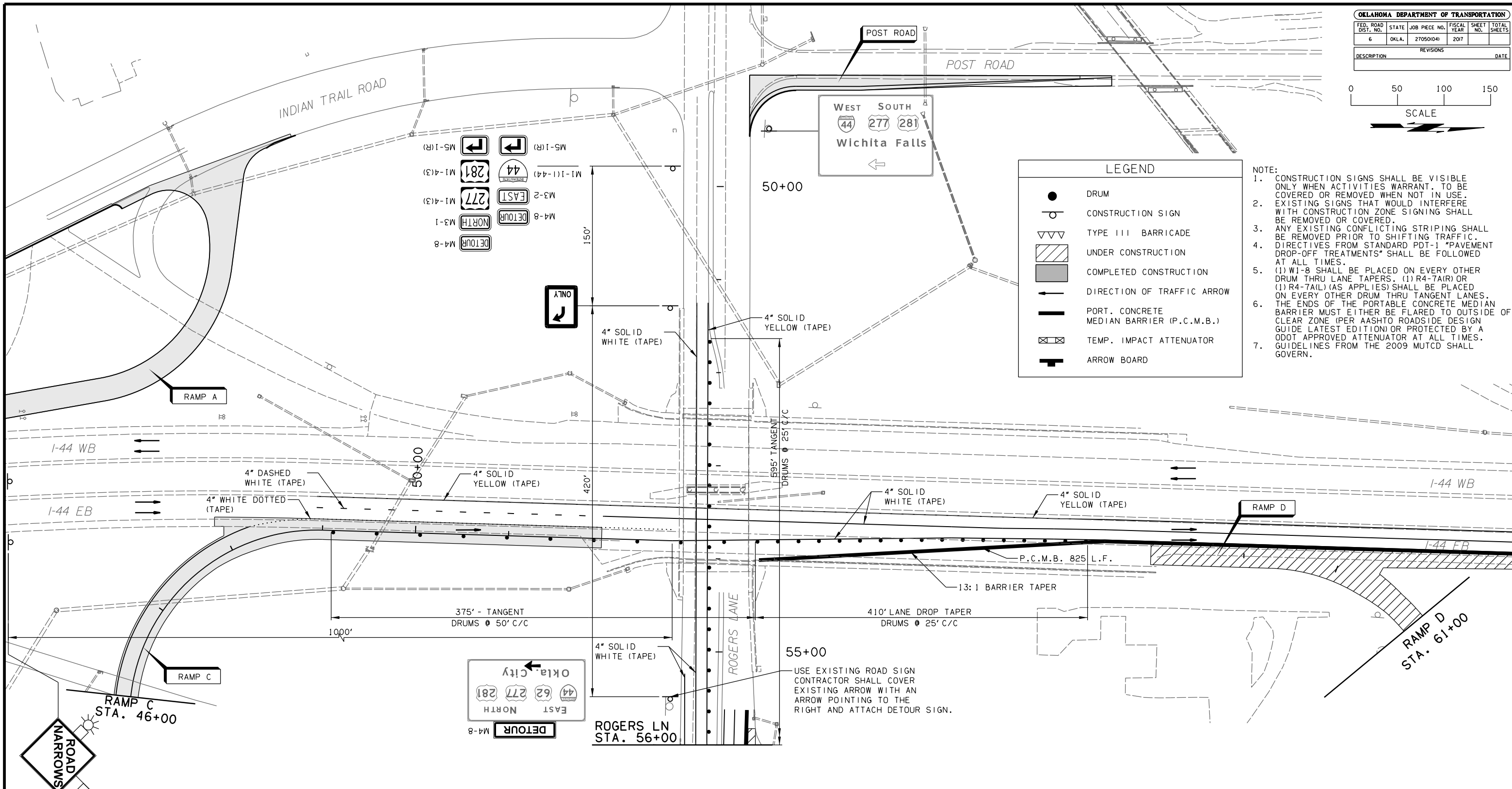
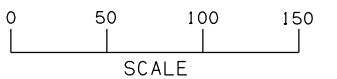


FED. ROAD DIST. NO.	STATE	JOB PIECE NO.	FISCAL YEAR	SHEET NO.	TOTAL SHEETS
6	OKLA.	27050(04)	2017		

DESCRIPTION	REVISIONS	DATE



LEGEND

- DRUM
- CONSTRUCTION SIGN
- ▽▽▽ TYPE III BARRICADE
- ▨ UNDER CONSTRUCTION
- COMPLETED CONSTRUCTION
- DIRECTION OF TRAFFIC ARROW
- PORT. CONCRETE MEDIAN BARRIER (P.C.M.B.)
- ⊠ TEMP. IMPACT ATTENUATOR
- ⬇ ARROW BOARD

- NOTE:**
- CONSTRUCTION SIGNS SHALL BE VISIBLE ONLY WHEN ACTIVITIES WARRANT. TO BE COVERED OR REMOVED WHEN NOT IN USE. EXISTING SIGNS THAT WOULD INTERFERE WITH CONSTRUCTION ZONE SIGNING SHALL BE REMOVED OR COVERED.
 - ANY EXISTING CONFLICTING STRIPING SHALL BE REMOVED PRIOR TO SHIFTING TRAFFIC.
 - DIRECTIVES FROM STANDARD PDT-1 "PAVEMENT DROP-OFF TREATMENTS" SHALL BE FOLLOWED AT ALL TIMES.
 - (1) W1-8 SHALL BE PLACED ON EVERY OTHER DRUM THRU LANE TAPERS, (1) R4-7A(R) OR (1) R4-7A(L) (AS APPLIES) SHALL BE PLACED ON EVERY OTHER DRUM THRU TANGENT LANES. THE ENDS OF THE PORTABLE CONCRETE MEDIAN BARRIER MUST EITHER BE FLARED TO OUTSIDE OF CLEAR ZONE (PER AASHTO ROADSIDE DESIGN GUIDE LATEST EDITION) OR PROTECTED BY A ODOT APPROVED ATTENUATOR AT ALL TIMES. GUIDELINES FROM THE 2009 MUTCD SHALL GOVERN.

MS-1(R) [Left Turn Arrow Sign]

M1-4(3) [281 Westbound Sign]

M1-4(3) [277 Eastbound Sign]

M3-1 [North Detour Sign]

M4-8 [Detour Sign]

M1-1(1-44) [44 Interchange Sign]

M3-2 [East Sign]

M4-8 [Detour Sign]

DETOUR

OKLA. CITY

44 62 277 281

EAST NORTH

M4-8

WEST SOUTH

44 277 281

Wichita Falls

←

ROGERS LN STA. 56+00

DETOUR

44 62 277 281

EAST NORTH

M4-8

PHASE 5 - RAMP D, E, D-E CONSTRUCTION: MAINTAIN REDUCED LANE WIDTH ON NORTHBOUND I-44. UTILIZE NEWLY CONSTRUCTED RAMPS B, C, AND B-C TO ACCOMMODATE NORTHBOUND I-44 RAMP ACCESS. CLOSE EXISTING NORTHBOUND ON RAMP AND REMOVE EXISTING PAVEMENT. BEGIN AND COMPLETE CONSTRUCTION OF BRIDGE B. CONSTRUCT RAMP D, E, AND D-E, EXCLUDING CURB ADJACENT TO ROGERS LANE. ONCE CONSTRUCTED, OPEN ALL RAMPS TO TRAFFIC.

PHASE 5

DESIGN	AKS	7/13	I-44 & US-62 INTERCHANGE
DRAWN	MAM	7/13	
CHECKED	JES	5/16	
APPROVED			
SQUAD	GARVER		

TRAFFIC CONTROL
(SHEET 17 OF 24)

STATE JOB NO. 27050(04) SHEET NO. 107